



歐格電子股份有限公司
AHOKU Electronic Company

法人說明會
Investor Conference

Dec. 18, 2024

簡報大綱



AHOKU

- 01 公司簡介 Company Profile
- 02 財務報告 Financial Report
- 03 產品銷售 Products Marketing
- 04 研發佈局 R&D Roadmap
- 05 意見交流 Q&A

Company Profile

集團組織 Group Organization

AHOKU



Company Profile

AHOKU

AHOKU Group	歐格電子 AHOKU Electronic	東莞歐陸 AHOKU Techland
公司設立 Founded	Aug. 1, 1983	Jul. 15, 1997
營運據點 Location	Taipei, Taiwan	Dongguan, China
集團定位 Position	Head Office Sales Center R&D Center	Manufacturing Center Engineering Center
資本額 Capital	NT\$ 1,020,000 Thousand	HK\$ 50,000 Thousand
上市日期 IPO	TWSE on Jan. 23, 2002	-----
工廠認證 Certification	-----	ISO 9001 ; SMETA 4-pillar
主要產品 Core Products	Smart Power Management Devices Touch Display and Peripherals of Arcade Games	
製程能力 Manufacturing Capability	Professional Manufacturing Service Provider • Flexibility and cost advantages of vertically integrated manufacturing • Manufacturing capability of both low-volume high-mix and high-volume scale • Semi-automatic production machines	



Company Profile



ACPA Group	華格科技 ACPA Technology	上海華格 ACPA Shanghai	昆山華格 ACPA Kunshan
公司設立 Founded	Nov. 26, 2001	Nov. 8, 2001	Nov. 7, 2006
營運據點 Location	New Taipei, Taiwan	Shanghai, China	Kunshan, China
集團定位 Position	Head Office Sales Center	Sales Office	Manufacturing Center R&D Center Engineering Center
資本額 Capital	NT\$ 245,399 Thousand	US\$ 320 Thousand	US\$ 4,200 Thousand
工廠認證 Certification	-----	-----	ISO 9001 ; ISO 14001 ; IATF 16949 (Certification in progress)
主要產品 Core Products	Circuit Protection Components		
製程能力 Manufacturing Capability	Total Circuit Protection Solution Provider •With core technologies of key material and ceramic recipes, product design and process integration •Impulse Current Test Lab. (IEC 61643-311/UL 1449) providing circuit design assistance and products test service •Gas Discharge Tube Leading Provider: specifications, safety certifications and production quantities rank No. 2 in this industry		



財務報告



AHOKU

Financial Report

Financial Report

合併綜合損益表

Consolidated Statements of Comprehensive Income



單位：新台幣仟元 / Unit in NT\$ thousand

年度 Year	Year 2020		Year 2021		Year 2022		Year 2023		2024 Q1~Q3		2023 Q1~Q3	
營業收入 Operating Revenue	818,717	100.0%	588,441	100.0%	748,389	100.0%	599,741	100.0%	466,050	100.0%	474,560	100.0%
營業毛利 Gross Profit	203,617	24.9%	117,540	20.0%	154,041	20.6%	131,113	21.9%	99,246	21.3%	104,941	22.1%
營業淨利 Operating Income	6,851	0.8%	(28,400)	(4.8%)	14,673	2.0%	(21,224)	(3.5%)	(19,178)	(4.1%)	(7,981)	(1.7%)
營業外收入及支出 Non-operating Income and Expenses	59,910	7.3%	31,745	5.4%	1,064	0.1%	27,336	4.6%	29,976	6.4%	6,420	1.4%
稅前淨利 Profit before Income Tax	66,761	8.2%	3,345	0.6%	15,737	2.1%	6,112	1.0%	10,798	2.3%	(1,561)	(0.3%)
稅後淨利 Net Profit	51,031	6.2%	5,804	1.0%	12,132	1.6%	5,986	1.0%	7,389	1.6%	180	0.0%
歸屬於母公司稅後淨利 Net Profit attributable to Owners of the Parent Company	57,796	7.1%	(1,917)	(0.3%)	6,287	0.8%	11,319	1.9%	8,765	1.9%	3,362	0.7%
基本每股盈餘(元) Basic EPS (NT\$)	0.57		(0.02)		0.06		0.11		0.09		0.03	

Financial Report

合併資產負債表 Consolidated Balance Sheets



單位：新台幣仟元 Unit in NT\$ thousand	2020.12.31		2021.12.31		2022.12.31		2023.12.31		2024.09.30	
現金及流動金融資產 Cash & Current Financial Assets	1,233,096	65.0%	1,116,840	61.8%	1,122,560	60.8%	1,211,623	65.5%	1,224,655	64.0%
應收帳款 Accounts Receivable	147,264	7.7%	132,138	7.3%	157,928	8.5%	109,245	5.9%	132,515	6.9%
存貨 Inventories	181,685	9.6%	220,644	12.2%	241,813	13.1%	227,499	12.3%	250,293	13.1%
不動產、廠房及設備 Property, Plant and Equipment	275,511	14.5%	258,627	14.3%	253,391	13.7%	239,443	13.0%	240,365	12.6%
其他資產 Other Assets	60,455	3.2%	78,871	4.4%	71,157	3.9%	61,144	3.3%	65,086	3.4%
資產總計 Total Assets	1,898,011	100.0%	1,807,120	100.0%	1,846,849	100.0%	1,848,954	100.0%	1,912,914	100.0%
流動負債 Current Liabilities	183,737	9.7%	170,562	9.4%	151,909	8.2%	147,634	8.0%	151,299	7.9%
非流動負債 Non-Current Liabilities	337,253	17.8%	334,502	18.5%	325,545	17.6%	319,925	17.3%	318,651	16.7%
負債總計 Total Liabilities	520,990	27.5%	505,064	27.9%	477,454	25.8%	467,559	25.3%	469,950	24.6%
權益總計 Total Equity	1,377,021	72.5%	1,302,056	72.1%	1,369,395	74.2%	1,381,395	74.7%	1,442,964	75.4%

項 目 Item	2020.12.31	2021.12.31	2022.12.31	2023.12.31	2024.09.30
負債比率 Debt Ratio (%)	27.5%	27.9%	25.8%	25.3%	24.6%
流動比率 Current Ratio (%)	865.0%	885.7%	1,029.5%	1,071.8%	1,088.6%
速動比率 Quick Ratio (%)	758.3%	742.7%	861.0%	907.8%	913.1%
資產報酬率 Return On Assets (%)	3.0%	(0.1%)	0.4%	0.6%	0.6%
權益報酬率 Return On Equity (%)	4.6%	(0.2%)	0.5%	0.9%	0.9%
每股淨值 Equity Per Share (NT\$)	12.20	11.39	12.02	12.25	12.81

產品銷售



AHOKU

Products Marketing



電源及雲端智慧管理裝置 Smart Power Management Devices

- Surge Protector
- Smart Power Management
- Travel Adapter/Converter



博弈機觸控螢幕及周邊設備 Touch Display and Peripherals of Arcade Games

- Touch Display of Arcade Games
- Peripheral Equipments



電路保護元件 Circuit Protection Components

- Protection Components
- Semiconductor Components



Smart PDU



智慧電源管理系統 Smart Power Management

- PDU Series

The AHOKU PDU provides data centers with multiple levels of power distribution solutions. It not only adds functionalities such as remote monitoring, energy management, but also built-in surge protector to ensure the safety that power equipment are protected from circuit overload.



Basic PDU



Metered PDU



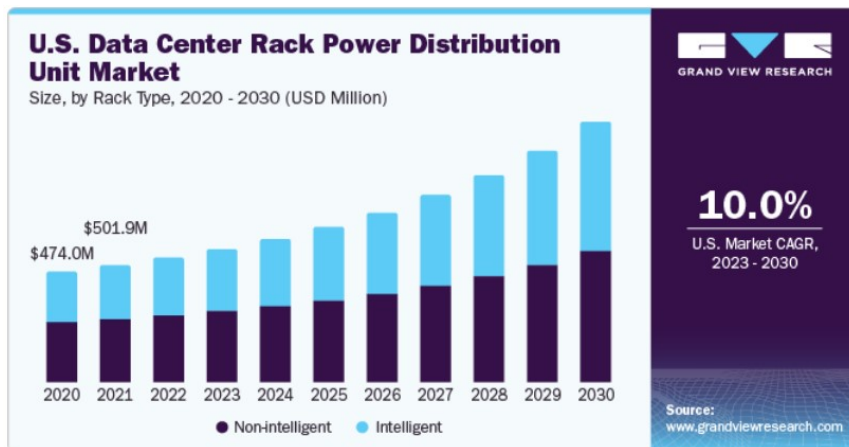
Smart PDU



High Rack PDU



- Power Distribution Unit (PDU) Market forecast at a CAGR of 8.21%, reaching USD 8.90 billion by 2030.
- PDU市場預測年複合成長率為 8.21% · 到 2030 年將達89億美元。
- Source by Research and Markets
- North America data center rack PDU market size by Rack Type, 2020-2030
- 北美數據中心PDU市場規模 2020-2030 · 區分智慧型與一般機型。



• PDU應用領域 PDU Application



• Basic PDU

基本款 PDU 包括 1U 及 0U, 10A/15A/20A, 鐵殼或塑殼
插座形式有 IEC, NEMA, 國別插座以及多孔數插座選擇

Basic PDU includes models in 1U and 0U, 10A to 20A, durable metal and plastic housing
options, with various outlet arrangements on the front and/or back.



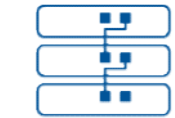
• Metered PDU

具有LED顯示介面的電流型PDU可提供計量式電流監控，避免因過載而造成資料遺失或設備損害，以實現能源優化和電路保護。

Metered PDU provides network-grade power distribution with monitoring to avoid data loss or equipment damage due to overload, thereby achieving energy optimization and circuit protection.



• Smart PDU



Daisy Chain
Daisy chain up to 4 Smart PDUs



Firmware Upgrade
Support local USB firmware upgrade



Monitoring
Remote control and monitoring



Touch Panel
Intuitive UI/UX touch interface



Ethernet
Allowed PDU to be remote control



Safety
Over current surge protection





• HIGH RACK PDU 大功率PDU

30A/32A/60A/63A/120A
380V/400V/415V PDU

隨著AI市場蓬勃崛起，朝向大功率PDU發展，三相電是最有效的分配電力方式，其應用範圍包括IT應用、資料中心、工業用電等

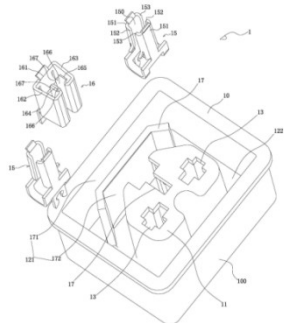
As the AI market experiences rapid growth and moves towards high-power PDU. Three-phase power is the most efficient way to distribute power electricity, with applications ranging from IT, data centers, to industrial power, etc.



- **IEC COMBO 專利設計十字形IEC插座
引領數據中心新世代**

IEC COMBO is a patent-designed for the Cross-shaped IEC socket! It is compatible with IEC 320 C13/C15/C19/C21 leading the new era of intelligent connectivity.

自行研發專利設計之十字型IEC式插座
可同時適用於IEC C13/C15/C19/C21

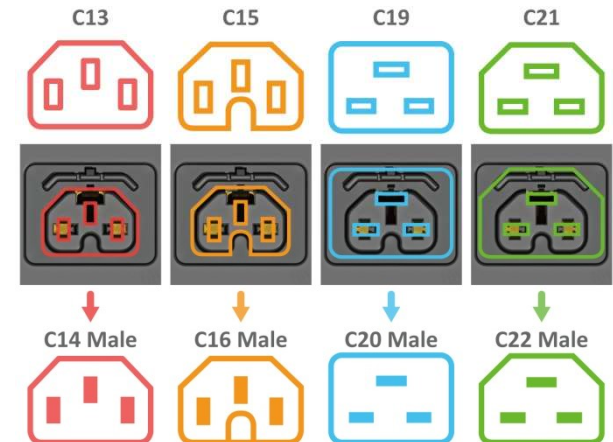


PATENT



4-in-1 IEC COMBO / IEC C13151921

Combination outlets make the PDU more diverse



• ACPA – Protection Components 華格-保護元件

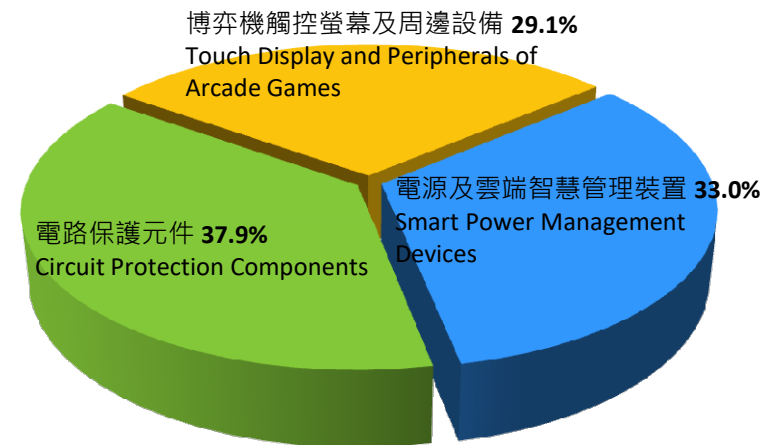
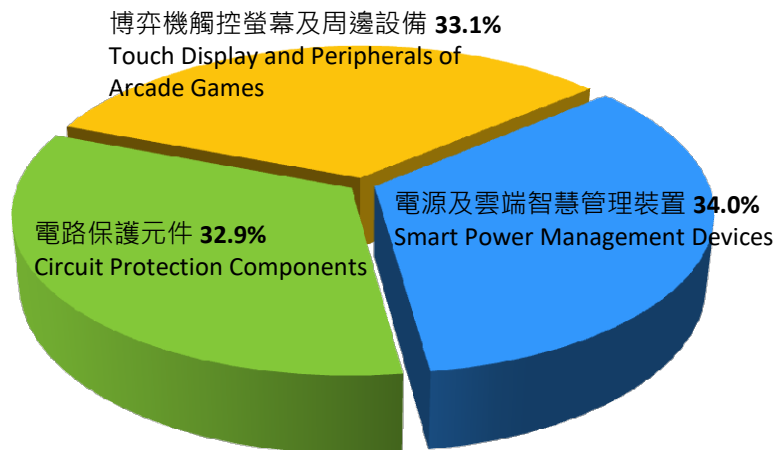


- 氣體放電管 Gas Discharge Tube (GDT)
- 壓敏電阻 Metal Oxide Varistor (MOV)
- 高分子正溫度係數熱敏電阻 Polymeric Positive Temperature Coefficient (PPTC)

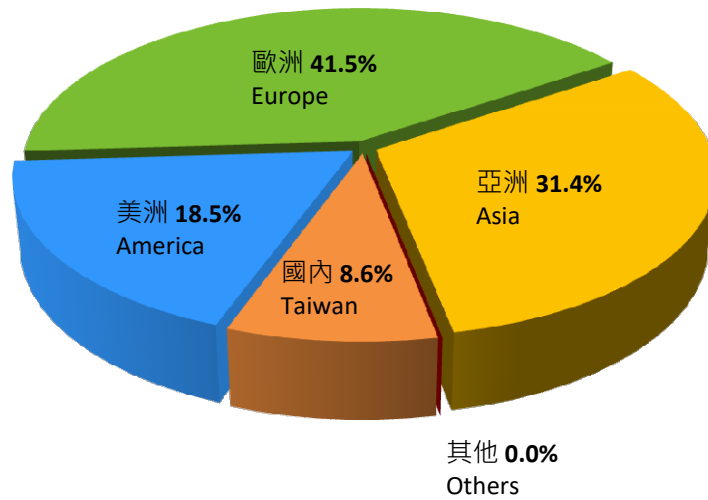


2024 Q1~Q3

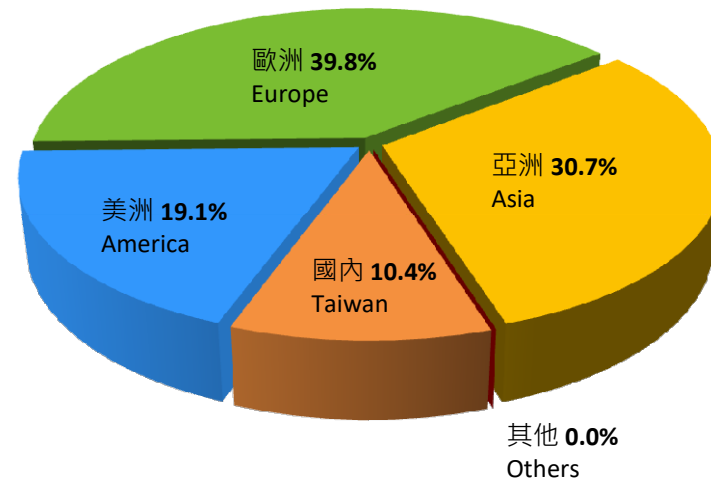
Year 2023



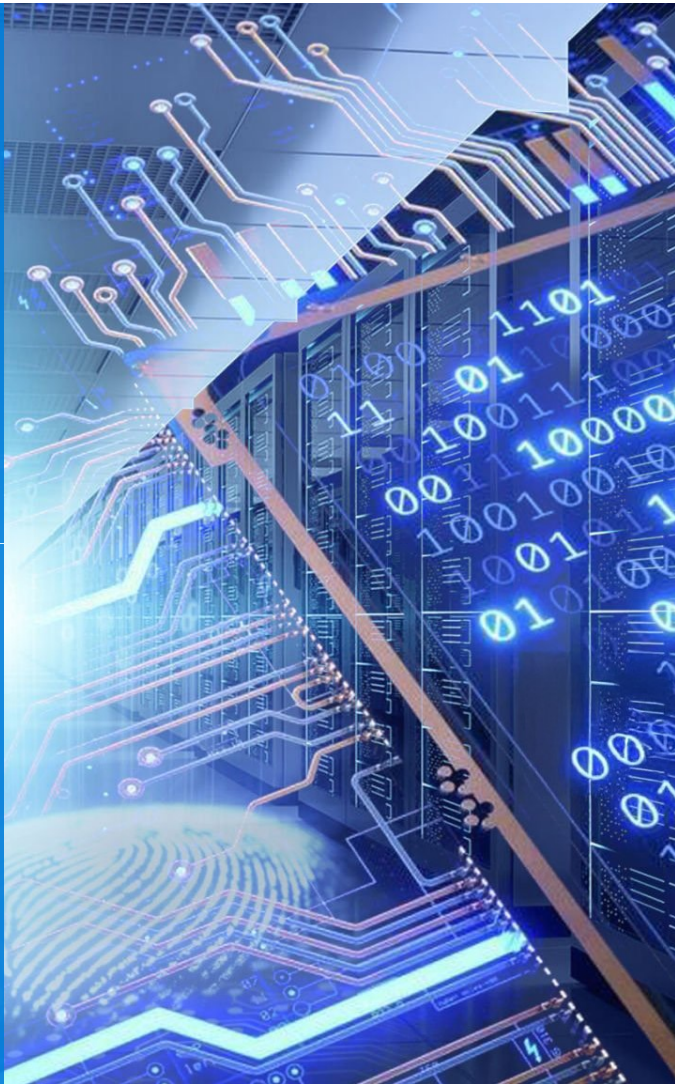
Year 2023



2024 Q1~Q3



研
發
佈
局



AHOKU

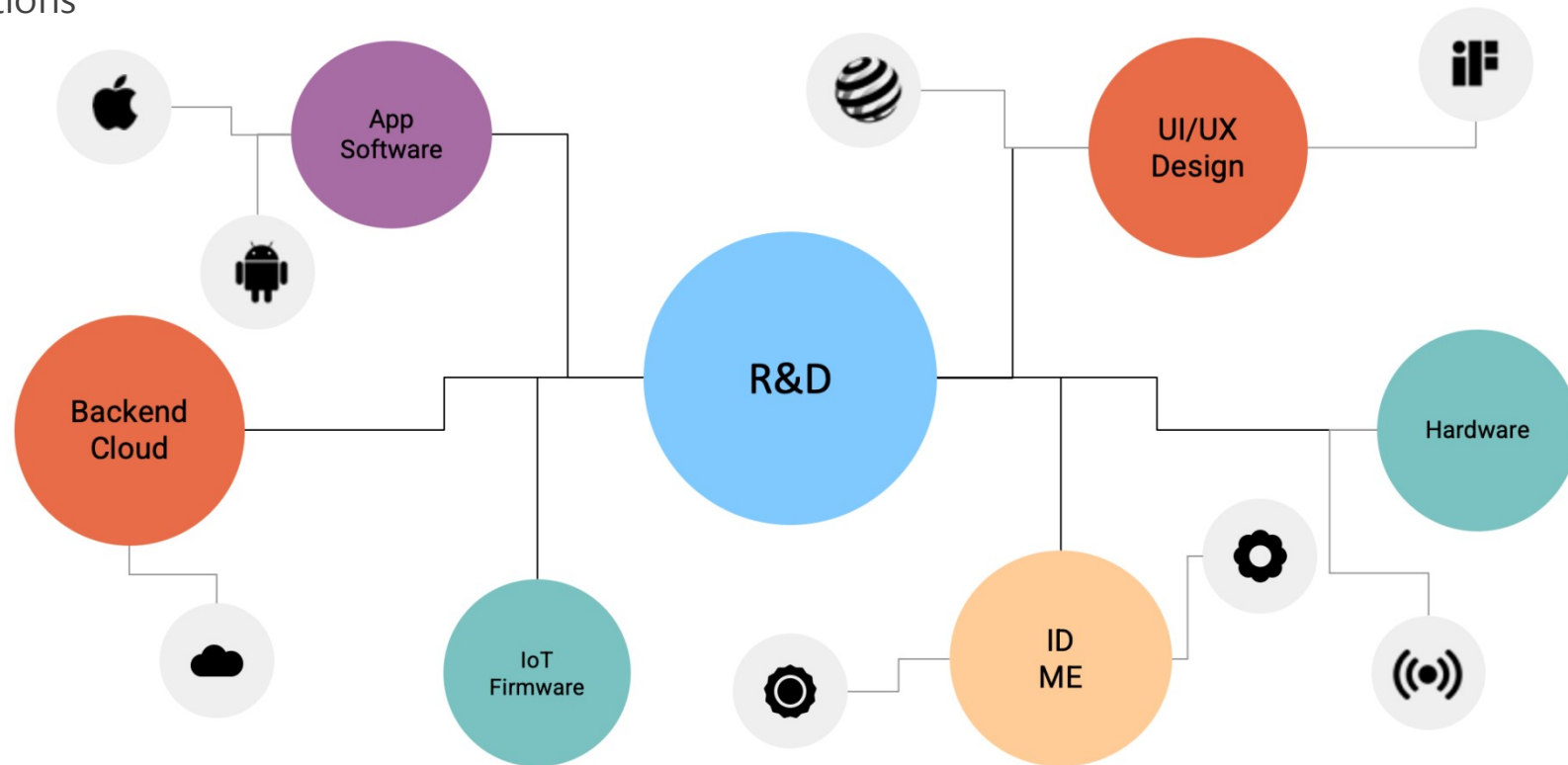
R&D Roadmap

R&D Roadmap

研發團隊 R&D team



我們的研發團隊由來自不同領域的人才組成，提供一站式的設計服務及解決方案。
Our R&D team is composed of talents from various fields, providing one-stop design services and solutions



TUV見證測試實驗室 TUV Witness Test Lab.

在研發階段，進行產品相關測試，以確保設計的可靠性、穩定性和縮短認證的時程。
During the design verification phase, conduct relevant tests to ensure design reliability, stability, and compliance with standards.



R&D Roadmap

Certified PD Adapter + sensing technology

AHOKU

萬國旅行充電器結合感測技術 PD Charger integrated with sensing technology

將有限的產品空間整合高瓦數的PD功能，結合無線感測技術，符合不同客戶市場的應用情境。

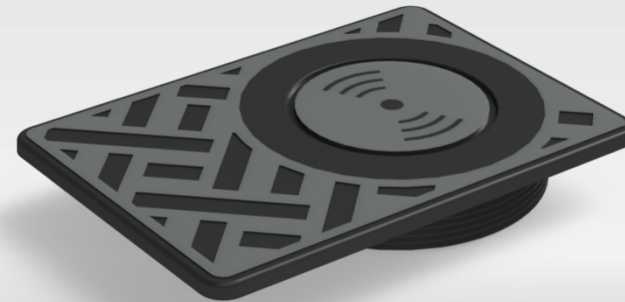
Integrating high-watt PD functionality into compact product space, combined with wireless sensing technology, to meet the application scenarios of different customer markets.



遊艇專用防水無線充電器 Yacht waterproof wireless charger

15瓦 Qi無線充電技術，結合IP66防水防塵設計與寬電壓輸入，提升效能，轉化效率和散熱性能。

15W Qi wireless charging technology, combined with IP66 waterproof and dustproof design and wide voltage input, enhances performance, conversion efficiency, and heat dissipation.



大功率伺服器機房電源分配器 High-Power High-Power Server PDU

研發超過 60 安培的大功率 PDU，研發了高電流感測電路與精準校正技術，確保即使在高效能伺服器機房與挖礦作業環境下，提供精確的電力量測。

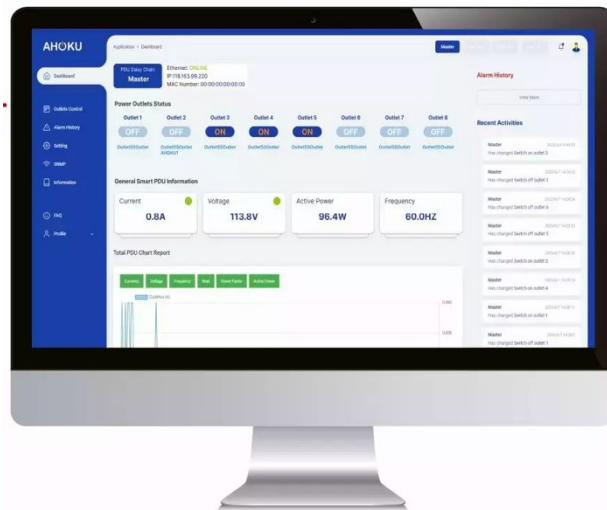
Developing high-power PDUs, we have designed high-current sensing circuits and precision calibration technology to ensure accurate power measurement even in high-performance server rooms and mining operations.



AI運算中心智慧電源分配器 AI Computing Center Smart PDU

我們運用模組化 PCBA 設計，讓電路板能獨立使用也可靈活組合，加速設計開發時間並提升擴充彈性，以符合客戶PDU應用客製需求

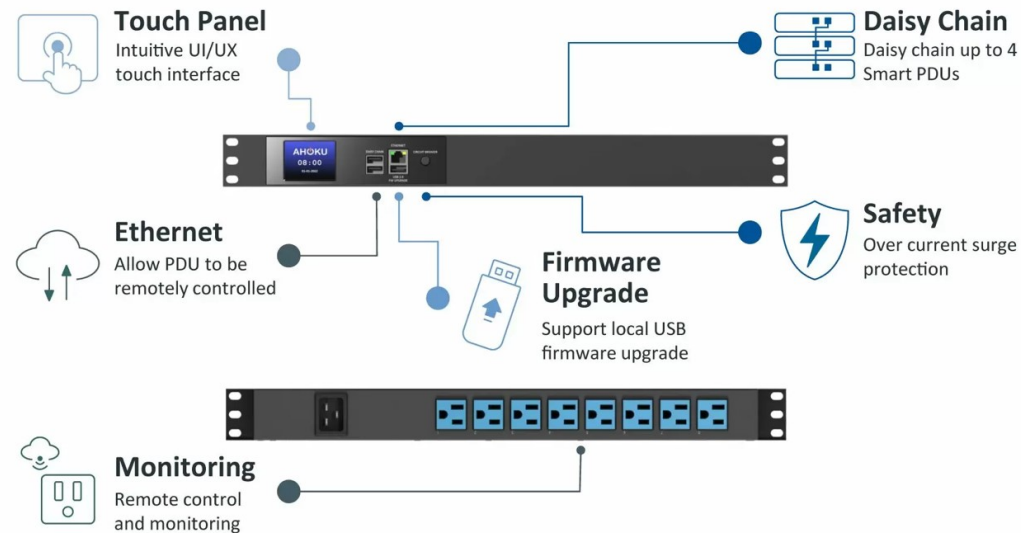
版端線路溝通採用CAN-BUS協議，減少訊號衰減並延長傳輸距離，實現提升量測功率的目的，韌體端資料傳輸協議也進行了重新規劃。



1U 雲端數據中心智慧電源分配器 Cloud Data Center Smart PDU

通過通過CB安規認證，新增SNMP功能選項與錯誤檢查，優化記憶體讓數據儲存量大幅提升。並導入自動校驗程序至生產流程，進一步提升電流偵測的精準度和校驗速度。

Passed CB safety certification and adding SNMP functionality options and error checking, optimized memory. Automated calibration procedures were introduced into the production process to further enhance the accuracy and speed of current detection and calibration.



多裝置電源系統管理後台

Multi-PDU Power System Management Platform

電腦管理系統採用跨平台程式語言開發，帳號密碼經過 AES 加密，加強安全性並讓資訊管理者方便管理。

系統可即時監測PDU電流電壓等使用狀況，當超過預設門檻值時，透過SMTP電子郵件、系統日誌或推送通知，立即將訊息推送至管理者的裝置。

新增 SNMP、HTTPS 串接協議，讓平台可擴充整合設備並進行資料交換。

網頁介面進行優化，提供數據下載、排程管理、事件紀錄，以及多時區選擇，滿足全球化資料中心管理需求。



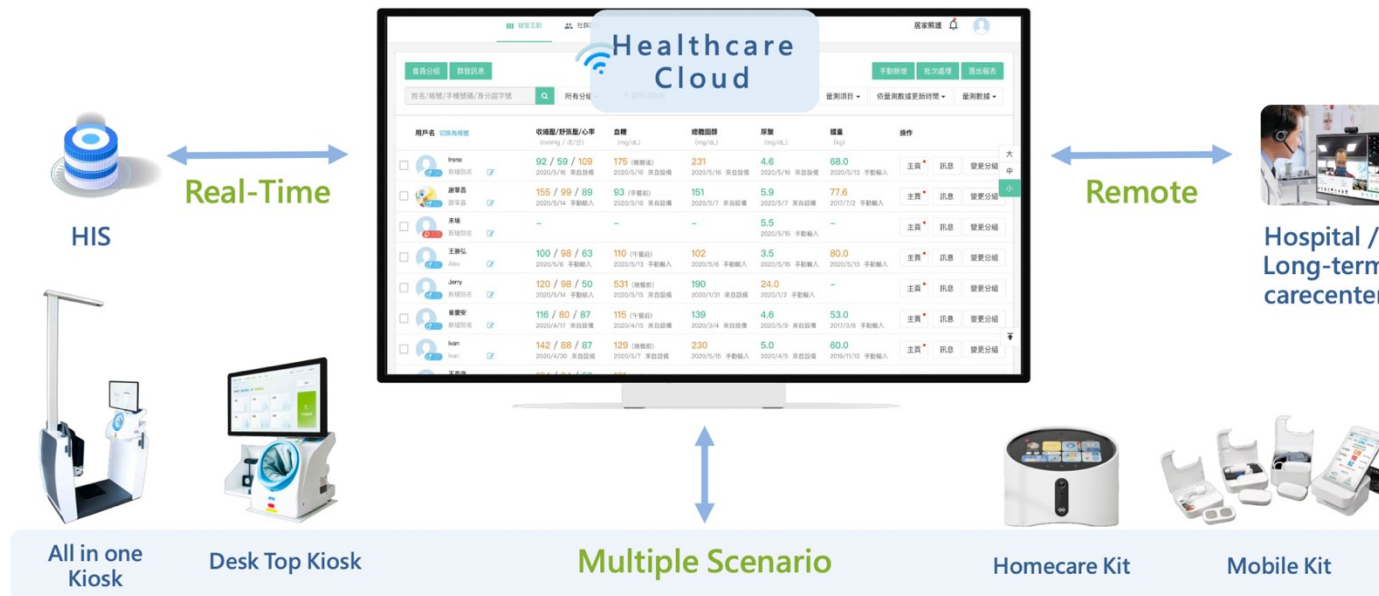
AI居家健康平台 AI Home Health IoT Platform

整合了 BLE 藍牙通訊協議，實現與全球日、德、台國際廠商醫療健康量測設備的整合連接。運用 Edge AI 邊緣運算技術進行音訊識別，並在經濟部產發署的「高齡普惠科技」專案支持下，成功將這項技術導入照護機構端。



健康大平台 Health Platform

我們與醫療 SI 和照護機構 SaaS 平台合作，將資料串接，將產品導入居家智慧輔具市場。
 我們應用了 WebRTC 技術，支援即時音視訊加密傳輸，確保視訊通訊安全。同時整合 ICE 伺服器，有效解決網路穿透問題，提供高畫質視訊通話與遠端視訊看護功能。
 系統目前導入當地 HAH 在宅照護市場，提升居家健康管理的效率與便利性。



AHOKU



Q&A

<https://www.ahoku.com.tw>

IR Contact Information

Spokesperson: Kevin Lin

Email: kevin.lin@ahoku.com

TEL: +886-2-27991199 Ext.331